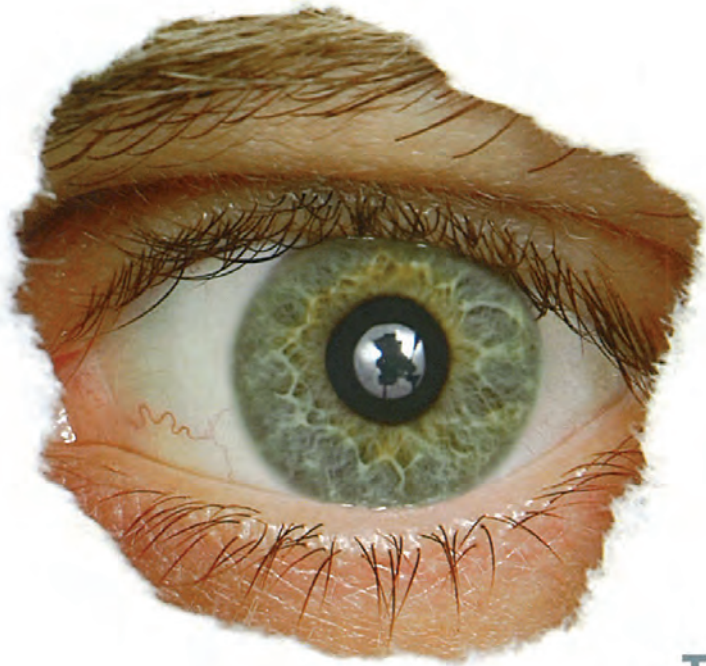


ARCHITECTURE
DESIGN
CULTURE

icon

APRIL 2009



**THE
DETECTIVE
ISSUE**

PRODUCTS



PAUL BAARS DESIGN ↙

Quirky Amsterdam based studio, Paul Baars Design has created Plug&Light, a nightlight that resembles a two-pin plug. Instead of pins, Plug&Light has two high quality long life (1,00,000hours) LEDs which come in white, red, yellow or blue.

Paul Baars Design

www.paulbaarsdesign.nl



JACK TRENCH ↗

Jack Trench Ltd are cabinet makers based in North London, offering a comprehensive service in bespoke interior and architectural joinery. They work closely with their clients taking a project from the initial design stages through to site completion, producing CAD drawings and 3D visuals. They aim to make the process smooth and flexible and have a comprehensive list of satisfied clients. Pictured are high gloss wardrobes – an example of their work.

Jack Trench Ltd

www.jacktrench.co.uk



SVEN CHRISTIANSEN ↙

Sven Christiansen now manufacture conference chairs in a choice of solid hardwoods to perfectly match their conference tables. Fulcrum chairs are available with or without arms, which may be upholstered, timber capped or in polished or piano black aluminium. To add movement and even greater comfort, Sven have developed an optional Freefloat rocking mechanism, which adds a silky-smooth forwards/backwards tilt.

Sven Christiansen Plc

www.sven.co.uk

NAUGHTONE ↘

Following the launch of the track sofa system, naughtone has worked closely with architects and designers to specify useful combinations of this modular system. One of naughtone's biggest advantages is their design literate team and UK production, which attract designers and architects who require tailor-made products to exact specifications. A London based architect commissioned the seating islands pictured after spotting the track sofa's CNC quilting detail. Here, the track seating islands complement the other naughtone products in the scheme perfectly.

Naughtone

www.naughtone.com

LUC SWEN ↙

Luc Swen has designed the Tangram sofa to suit most environments with limited or large open areas. The sofa can be used in any combination with a four base or 3 back module like a Tangram, which is a Chinese geometric puzzle consisting of a square cut into seven pieces that can be arranged to make various other shapes.

Luc Swen

www.lucswen.com



118 ICON APRIL 2009

